



India Meteorological Department  
Earth System Science Organisation  
(Ministry of Earth Sciences)

BULLETIN NO. : 14 (ARB/02/2020)

TIME OF ISSUE: 2100 HOURS IST

DATED: 01.06.2020

FROM: INDIA METEOROLOGICAL DEPARTMENT (FAX NO. 24643965/24699216/24623220)

TO: CONTROL ROOM, NDM, MINISTRY OF HOME AFFAIRS (FAX.NO. 23092398/23093750)

CONTROL ROOM NDMA (FAX.NO. 26701729)

CABINET SECRETARIAT (FAX.NO.23012284, 23018638)

PS TO HON'BLE MINISTER FOR S & T AND EARTH SCIENCES (FAX NO.23316745)

SECRETARY, MOES (FAX NO. 24629777)

H.Q. (INTEGRATED DEFENCE STAFF AND CDS) (FAX NO. 23005137/23005147)

DIRECTOR GENERAL, DOORDARSHAN (23385843) DIRECTOR GENERAL, AIR (23421101, 23421105, 23421219)

PIB MOES (FAX NO. 23389042)

UNI (FAX NO. 23355841)

D.G. NATIONAL DISASTER RESPONSE FORCE (NDRF) (FAX NO. 26105912, 2436 3260)

DIRECTOR, PUNCTUALITY, INDIAN RAILWAYS (FAX NO. 23388503)

CHIEF SECRETARY, KERALA (FAX NO. 0471-2327176)

ADMINISTRATOR, LAKSHADWEEP ISLANDS (FAX NO. 0413-262184)

ADMINISTRATOR, UNION TERRITORY OF DAMAN & DIU (0260-2230775)

ADMINISTRATOR, UNION TERRITORY OF DADRA NAGAR HAVELI (0260-2230775)

CHIEF SECRETARY, KARNATAKA (FAX NO. 080-22258913)

CHIEF SECRETARY, GOA (FAX NO. 0832-2415201)

CHIEF SECRETARY, MAHARASHTRA (FAX NO. 022- 22028594)

CHIEF SECRETARY, GUJARAT (FAX NO. 079-23250305)

CHIEF SECRETARY, DAMAN & DIU (FAX NO. 0260-2230775)

CHIEF SECRETARY, DADRA & NAGAR HAVELI (FAX NO. 0260-2645466)

Sub: Depression over Eastcentral Arabian Sea: Cyclone Alert for north Maharashtra - south Gujarat coasts: Yellow message

The **Depression** over Eastcentral and adjoining Southeast Arabian Sea moved north-northwestwards with a speed of 09 kmph during past 06 hours and lay centred at 1730 hours IST of today the 01<sup>st</sup> June, 2020 over Eastcentral Arabian Sea near latitude 14.2°N and longitude 71.2°E about 310 km southwest of Panjim (Goa), 570km south-southwest of Mumbai (Maharashtra) and 800 km south-southwest of Surat (Gujarat).

It is very likely to intensify into a Deep Depression during next 12 hours and **intensify further into a Cyclonic Storm over Eastcentral Arabian Sea during the subsequent 24 hours**. It is very likely to move nearly northwards initially till 02<sup>nd</sup> June Noon and then recurve north-northeastwards and cross north Maharashtra and south Gujarat coasts between Harihareshwar (Raigad, Maharashtra) and Daman during the afternoon of 03<sup>rd</sup> June .

Forecast track and intensity are given in the following table:

Date/Time(IST)	Position (Lat. °N/ long. °E)	Maximum sustained surface wind speed (Kmph)	Category of cyclonic disturbance
01.06.20/1730	14.2/71.2	45-55 gusting to 65	Depression
01.06.20/2330	14.7/71.2	45-55 gusting to 65	Depression
02.06.20/0530	15.1/71.2	55-65 gusting to 75	Deep Depression
02.06.20/1130	15.6/71.3	70-80 gusting to 90	Cyclonic Storm
02.06.20/1730	16.2/71.5	85-95 gusting to 105	Severe Cyclonic Storm
03.06.20/0530	17.5/72.1	95-105 gusting to 115	Severe Cyclonic Storm
03.06.20/1730	19.8/73.5	70-80 gusting to 90	Cyclonic Storm
04.06.20/0530	21.2/75.0	55-65 gusting to 75	Deep Depression
04.06.20/1730	22.5/76.7	45-55 gusting to 65	Depression

Spatial rainfall distribution: Isolated: <25%, A few: 26-50%, Many: 51-75%, Most: 76-100%

Rainfall amount (mm): Heavy rain: 64.5 – 115.5, Very heavy rain: 115.6 – 204.4, Extremely heavy rain: 204.5 or more.

## Warnings:

### (i) Rainfall:

Light to moderate rainfall at most places with isolated heavy falls very likely over Lakshadweep area, north Kerala and coastal Karnataka during next 12 hours. Light to moderate rainfall at most places with heavy to very heavy falls at isolated places very likely over south Konkan & Goa during 01<sup>st</sup> – 03<sup>rd</sup> June.

Light to moderate rainfall at most places with isolated heavy falls on 02<sup>nd</sup> June; with heavy to very heavy falls at a few places and **extremely heavy falls** at isolated places on 03<sup>rd</sup> & 04<sup>th</sup> June very likely over north Konkan and north Madhya Maharashtra.

Light to moderate rainfall at most places with isolated heavy to very heavy falls very likely over south Gujarat state, Daman, Dadra & Nagar Haveli on 03<sup>rd</sup> June and with heavy to very heavy falls at a few places and **extremely heavy falls** at isolated places over south Gujarat region, Daman, Dadra & Nagar Haveli and on 04<sup>th</sup> June.

### (ii) Wind warning

Squally wind, speed reaching 45-55 kmph gusting to 65 kmph, is prevailing over Eastcentral and adjoining southeast Arabian Sea. It is very likely to become 50-60 kmph gusting to 70kmph over Eastcentral Arabian Sea by 02<sup>nd</sup> June morning. It will gradually increase becoming Gale wind, speed reaching 60-70 kmph gusting to 80 kmph, over eastcentral Arabian Sea off south Maharashtra coast from 02<sup>nd</sup> June Noon and further becoming 95-105 kmph gusting to 115 kmph over eastcentral and adjoining northeast Arabian Sea along & off Maharashtra (Raigad, Mumbai, Palghar, Thane) coast from 03<sup>rd</sup> June afternoon. Gale wind speed reaching 80-90 kmph gusting to 100 kmph likely along & off Valsad, Navsari districts of Gujarat and Ratnagiri, Sindhudurg districts of Maharashtra, and 70-80 kmph gusting to 90 kmph along & off Surat & Bharuch districts of south Gujarat from 3<sup>rd</sup> June afternoon.

Squally wind, speed reaching 50-60 kmph gusting to 70 kmph is likely prevail over eastcentral Arabian Sea along and off Karnataka-Goa coasts during next 48 hours.

Squally wind, speed reaching 40-50 kmph gusting to 60 kmph is likely to prevail over Lakshadweep area and along & off Kerala coast during next 24 hours.

### (iii) Sea condition

The Sea condition is very likely to be rough to very rough over Eastcentral & adjoining Southeast Arabian Sea during next 18 hours. It would become very rough to High over eastcentral Arabian Sea from 02<sup>nd</sup> June Noon. It will become High to very High over Eastcentral Arabian Sea along & off Maharashtra coast from 02<sup>nd</sup> June Evening.

The Sea condition is very likely to be very rough to High over northeast Arabian Sea along & off south Gujarat coast on 03<sup>rd</sup> June.

### (iv) Fishermen Warning

Fishermen are advised not to venture into southeast Arabian Sea, Lakshadweep area and along & off Kerala coast during next 24 hours; eastcentral and Northeast Arabian Sea and along & off Karnataka-Goa-Maharashtra-south Gujarat coasts till 03<sup>rd</sup> June.

*The next bulletin will be issued at 0230 hrs IST of tomorrow, the 2<sup>nd</sup> June, 2020.*

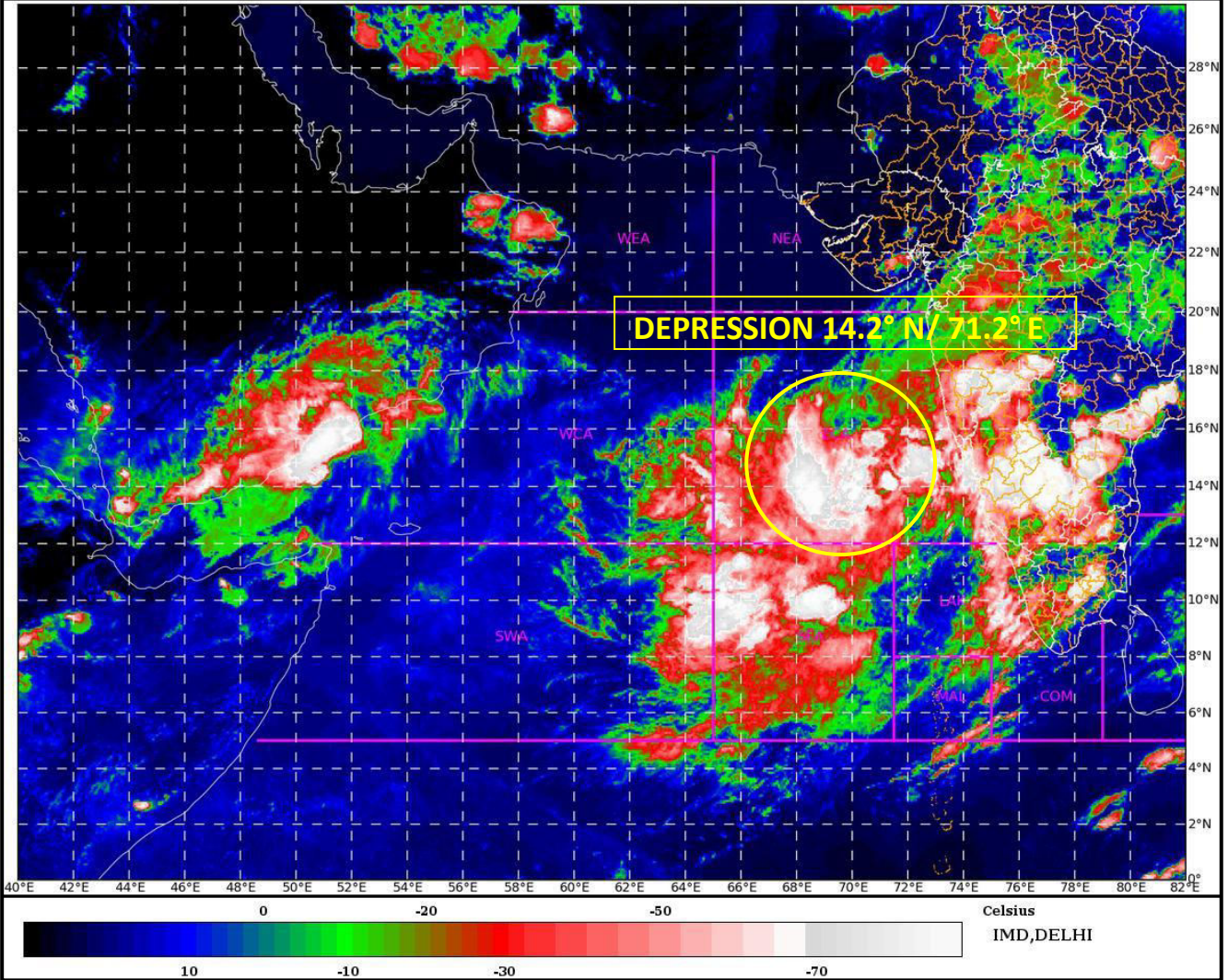
(Sunitha Devi)  
Scientist-E, RSMC, New Delhi

**Copy to: ACWC Chennai/ ACWC Mumbai/ MC Goa/ MC Bengaluru/ CWC Ahmedabad/ Thiruvananthapuram.**

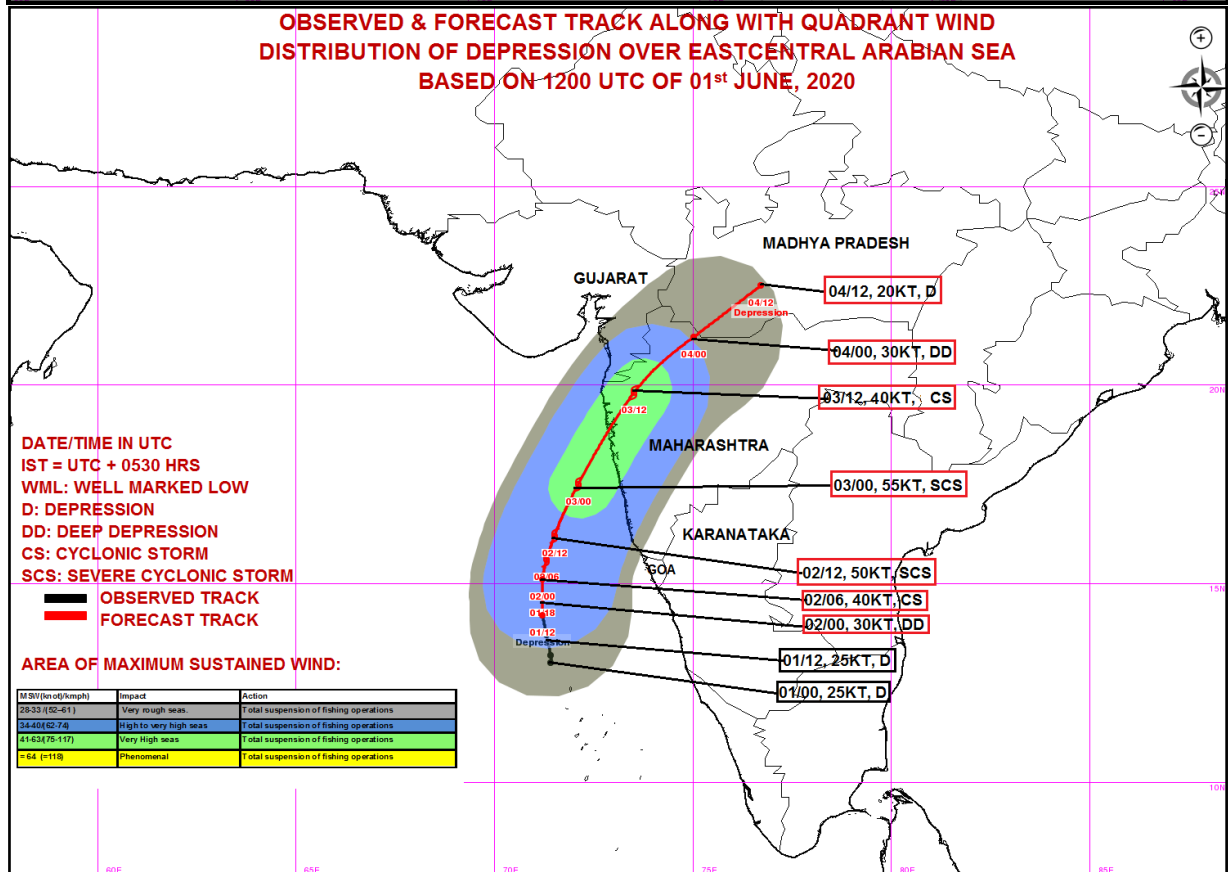
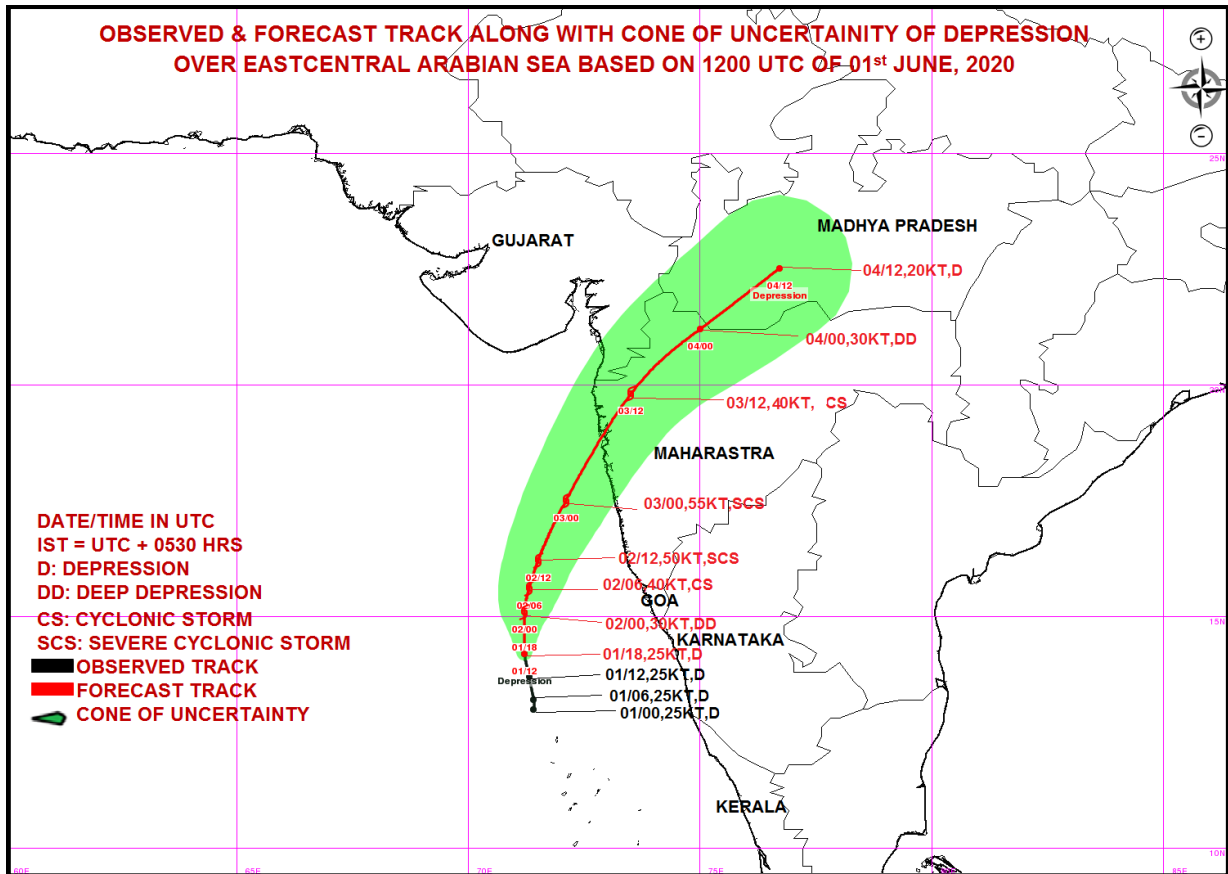
**Spatial rainfall distribution: Isolated: <25%, A few: 26-50%, Many: 51-75%, Most: 76-100%**  
**Rainfall amount (mm): Heavy rain: 64.5 – 115.5, Very heavy rain: 115.6 – 204.4, Extremely heavy rain: 204.5 or more.**

SAT : INSAT-3D IMG  
IMG\_TIR1\_TEMP 10.8 um  
ARABIAN\_SEA

01-06-2020/(1400 to 1426) GMT  
01-06-2020/(1930 to 1956) IST



**Spatial rainfall distribution: Isolated: <25%, A few: 26-50%, Many: 51-75%, Most: 76-100%**  
**Rainfall amount (mm): Heavy rain: 64.5 – 115.5, Very heavy rain: 115.6 – 204.4, Extremely heavy rain: 204.5 or more.**



MSW(knot/kmph)	Impact	Action
28-33 (52-61)	Very rough seas.	Total suspension of fishing operations
34-40 (62-74)	High to very high seas	Total suspension of fishing operations
41-63 (75-117)	Very High seas	Total suspension of fishing operations

Spatial rainfall distribution: Isolated: <25%, A few: 26-50%, Many: 51-75%, Most: 76-100%  
 Rainfall amount (mm): Heavy rain: 64.5 – 115.5, Very heavy rain: 115.6 – 204.4, Extremely heavy rain: 204.5 or more.